

Run Times and Modes

KTV DRIVE FRONT

	BLAST	ECONOMY	DAY FLASH	FLASH 1	FLASH 2
	70 LUMENS	15 LUMENS	200 LUMENS	30 LUMENS	15 LUMENS
	2:00 h:min	10:00 h:min	6:30 h:min	13:15 h:min	20:00 h:min

Run Times and Modes

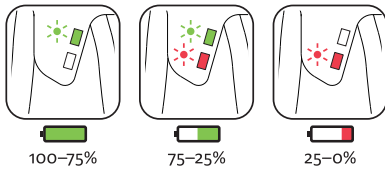
KTV PRO DRIVE REAR

	BLAST	ECONOMY	DAY FLASH	FLASH 1	FLASH 2
	20 LUMENS	3 LUMENS	75 LUMENS	25 LUMENS	10 LUMENS
	4:00 h:min	18:00 h:min	10:00 h:min	8:45 h:min	19:30 h:min

KTV DRIVE REAR

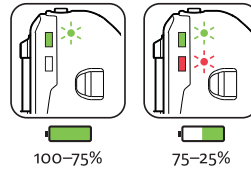
	BLAST	ECONOMY	FLASH 1	FLASH 2	PULSE
	10 LUMENS	3 LUMENS	10 LUMENS	5 LUMENS	10 LUMENS
	4:30 h:min	12:30 h:min	12:30 h:min	20:00 h:min	7:00 h:min

Battery

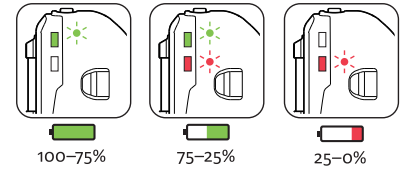


Battery

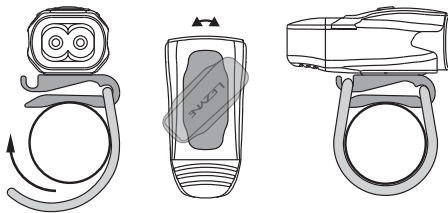
KTV PRO DRIVE REAR



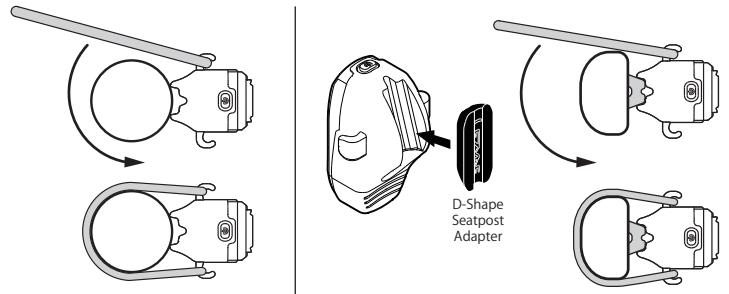
KTV DRIVE REAR



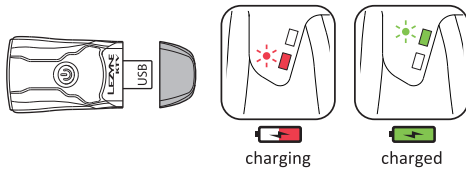
Mounting



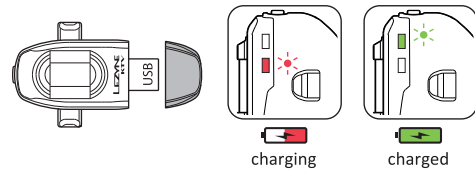
Mounting



Charging



Charging



- Before using your Lezyne LED Light for the first time, fully charge battery.
- Antes de utilizar la luz LED por primera vez, cargue completamente la batería.
- Avant d'utiliser votre lampe LED Lezyne pour la première fois, chargez complètement la batterie.
- Bevor Sie die ihre Lezyne Lampe zum ersten Mal benutzen, sollte Sie diese vollständig laden.
- 最初にLezyne LEDライトを使用する前に、バッテリーをフルに充電してください。

For more info go to: [www.lezyne.com/support.php](http://www.lezyne.com/support.php)